



Tamarack
Waldorf School

Town Hall Meeting

July 8, 2020 7:00 pm

- Planning for the 2020-21 School Year

Town Hall Meeting



- **Tonight's Presenters**

- Martha Cannon, Board of Trustees President and Alumni Parent
- Phil Vacca, Board of Trustees Treasurer and Current Parent
- Lora Poulos, Administrative Director and Alumni Parent
- Martha Flores, Early Childhood Level Chair, Flower Garden Teacher and Current Parent

Town Hall Meeting

- **Agenda Topics**

- Structure of our COVID-19 response
- Financial Status
- Distance Learning Survey Results
- Planning for the delivery of our Waldorf Curriculum for 2020-21 School Year
- Planning for Health and Safety for 2020-21 School Year
- Decisions made for the 2020-21 School Year
- Next Steps
- Questions



Structure of our COVID-19 Response

- How are we managing the necessary decision making and planning?
 - Established a Crisis Team
 - Board Members: Denise Haussy, Martha Cannon, Phil Vacca, Kristin Paltzer
 - Faculty Members: Amy Marks, Kim Bair, Martha Flores, Ceal Hunter
 - Administration: Lora Poulos, Cheri Rognsvoog
 - Crisis Team responsible for ensuring that planning is moving forward in a collaborative, responsive and responsible way
 - Crisis Team will make decisions related to COVID-19 planning unless further consensus is deemed necessary by the governing school bodies (Board, Faculty, Administration)



Structure of our COVID-19 Response

- What and how are we basing our decisions and planning?
 - Crisis Team developed a 2020-21 School Planning Guide addressing the following topics:
 - Health and Safety
 - Facilities
 - Financial and Legal
 - Curriculum and Teaching
 - School Operations
 - State of Wisconsin Rules, Orders and Law
 - Communication and Community Outreach
 - Parent Survey results
 - Discussions with Faculty and Staff
 - State and Local Health Guidelines
 - DPI Reopening Guidelines
 - AWSNA Guidance

Structure of our COVID-19 Response

- What decisions are we making?
 - Impossible to be specific about all plans at this moment as there are too many variables
 - Developed skeleton plans for several scenarios, which will update and expand as information from public health and local leadership becomes available
 - What we are presenting is a draft, based on the information we currently have
 - As we receive community input, get more guidance from the State of Wisconsin and local health department, our plan will develop
 - Updates will be communicated via ParentSquare as we fully prepare for 2020-21 school year

Financial Update

- Spring 2020 – How did we end the year:
 - Financial picture looks healthy going into the summer
 - We were able to collect the majority of tuition, supply fees, extended care
 - Choice payments have continued as planned and on time
 - Met our goal for Annual Appeal, but received no Benefit Event revenue



Financial Update

- 2020-21 School Year – How does the coming year look, knowing there are questions and uncertainties?
 - Enrollment: Slight increase from last year
 - Projecting a loss in revenue from:
 - Annual Appeal, Benefit Events, and TPACC events
 - Projecting additional expenses:
 - Staffing, Cleaning, toggling between on campus and distance learning, technology, safety needs, extra materials

Financial Update

- Summary
 - School is financially viable - we will be here as we move forward into the 2020-21 school year and beyond
 - There will be some changes for everyone in the coming year – for families as they work to pay tuition and fees, and for faculty and staff as there will be changes in scheduling and positions
 - We are committed to keeping every family in the school, finding ways to manage loss in revenue until the economy improves
 - We are committed to supporting our employees as much as we can, as faculty and staff are the heart of our school

Distance Learning Survey Results

- **What went well during Distance Learning**

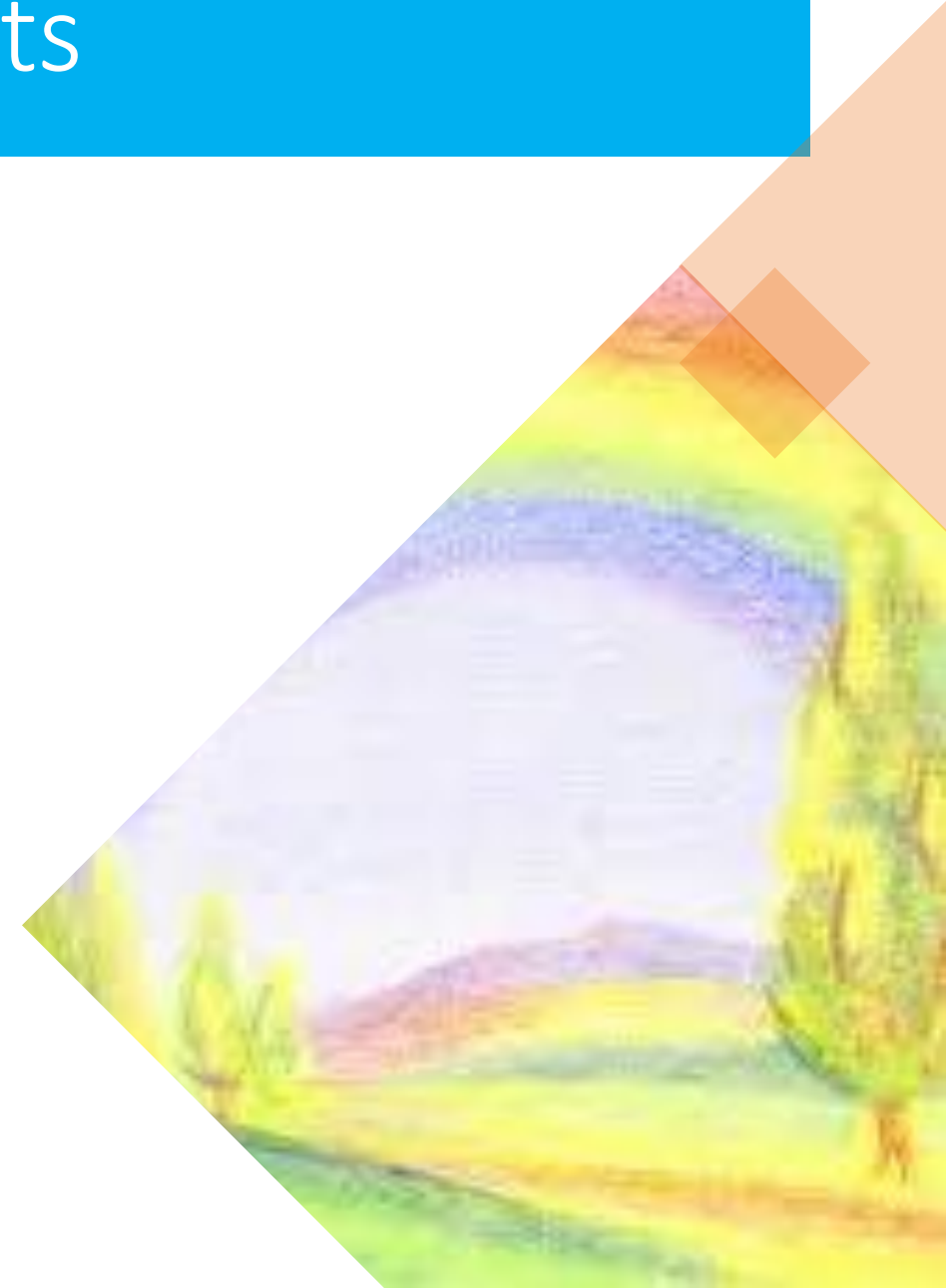
- Organized, consistent daily schedule, clear expectations
- Lessons provided enough challenges, with activities that were age appropriate and engaging
- Google classroom and zoom calls
- Appreciated paper packets vs computer learning
- Preferred Audio clips of teachers over screen time
- Teacher communication and support
- Being involved in students learning
- Students being self-led and independent



Distance Learning Survey Results

- **What was challenging during Distance Learning**

- Not seeing or spending time with teacher and classmates
- Lack of social emotional connection with community
- Balancing work, home life, and teaching student
- Difficulty keeping student motivated and engaged
- Special subjects
- Teachers using different platforms for communication and delivery of materials
- Too much work expected



Distance Learning Survey Results

- **What could be done differently with Distance Learning**
 - More live virtual learning
 - One platform for delivery and communication
 - One-on-one and small group instruction
 - Improve delivery of special subjects
 - Waldorf and homeschool instruction for parents
 - Less rigid on academics and more focus on social/emotional well being
 - Experiential child/family led learning
 - Guidance to keep children motivated



Curriculum and Teaching Update

What will school look like in the fall?

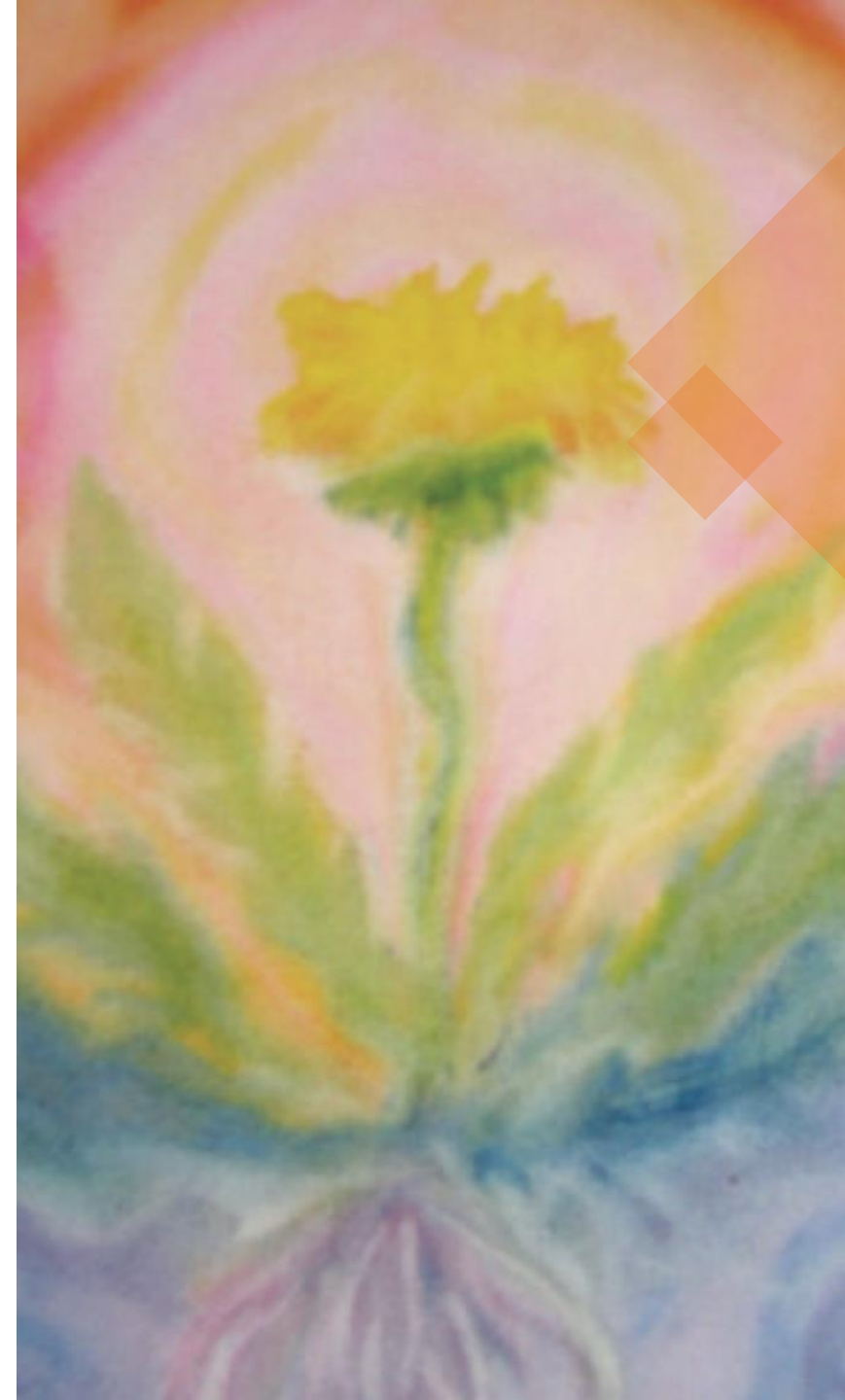
- Working through a variety of possibilities, anticipating the need to move between them as necessary
- Given the belief that the students thrive if they are together on campus, we are evaluating the feasibility of that as much as the State of Wisconsin will allow
- There will be State and Health Department regulations, along with DPI and CDC regulations that we need to meet
- We are committed to providing the full Waldorf Curriculum to our students – developmentally appropriate art and movement filled academic curriculum that meets them body, mind and spirit - whether that be in person, remotely or a combination of both



Curriculum and Teaching Update

Planning for normal school days with social distancing – Plan A

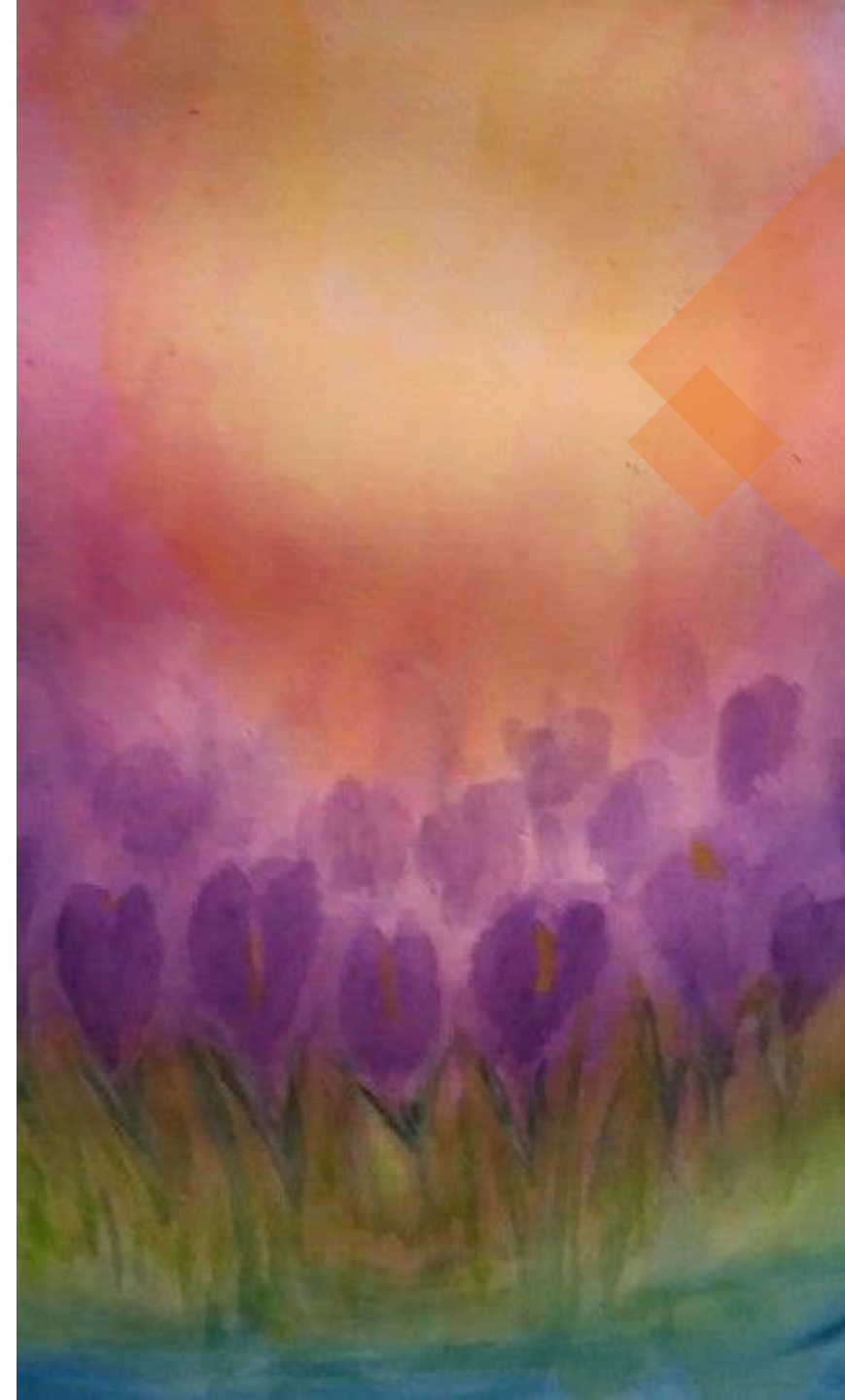
- This is the easiest scenario to plan for – *but still has impact on the school*
- Need to determine how best to serve students who may not be able to return to the classroom through a remote learning program (assistants will help with remote learning groups)
- Many safety measures will need to be planned and implemented
- Classrooms will be limited to only essential materials and furniture to allow for as much space as possible in the classroom
- Re-imagining of festivals, plays, assemblies, field trips, etc.
- Each classroom and class will be considered a contained group, no moving to other rooms for instruction



Curriculum and Teaching Update

Planning for physical distancing and low-density instruction – Plan B

- Evaluating how we would teach smaller groups, rather than full classes, including how to create additional spaces to make this possible
- Looking at schedules, and ways to group students that would support this approach for long periods of time (several months) and that all students receive the full Waldorf Curriculum and see their class teachers daily
- As of right now, we are actively avoiding staggered starts, split weeks, weeks on and off but we must be flexible as needed
- All points in Plan A are part of Plan B



Curriculum and Teaching Update

Planning for Remote Instruction – Plan C

- Possible that there will be times next year that we are not allowed to be on campus
- Applying what we have learned this spring about what works and what does not
- One learning platform will be used for all grades and early childhood to streamline classroom communications along with physical learning packets and supplies
- Planning for specific blocks that are most amenable to remote instruction and holding them ready for any such times
- Increased planning for areas - individual education needs, family technology needs, materials and supplies

Curriculum and Teaching Update

What other curriculum concerns/plans are we carrying?

- Increased readiness to support students with individual educational needs – in all the possible school scenarios in the fall
- Strengthening areas of the curriculum that did not translate well for distance learning – and ensure that students are brought back into the more active hands-on parts of the curriculum
- Student mental and emotional health – how do we support students as they return to school, ensuring that they feel loved and secure and that their needs are being met
- Bringing nature studies to support the children's needs. There will be a strong curricular focus on being outdoors, community relations/connections
- Tamarack Waldorf School will strive to provide the highest quality Waldorf curriculum should we move into a distance learning model. Therefore we will be working with a parent and student agreement plan moving forward with distance learning. This plan will clarify expectations for everyone



Curriculum and Teaching Update

Inspirations our Teachers are Working With

- Every teacher is planning for a 3-week block of distance learning to have prepared before the school year begins
- Every teacher is incorporating therapeutic stories into the curriculum to serve as a healing component
- Every teacher will strive to maintain and build personal connections with students if we are distance learning
- A working group of teachers is re-imagining the festival life of Tamarack by looking closely at the individual celebrations
- Each student will be working with their own set of materials that will not be shared, any shared items will be cleaned and sanitized after each use
- Every early childhood class and grades class will be assigned an assistant to support in-class learning and distance learning if we should move to that model
- Should we move to a distance learning model, we will strive to create a curriculum that students can work independently from
- Outdoor time will be incorporated whenever possible, as the neighborhood provides many options



Health and Safety Update



We will follow the Back to School requirements put forth by the State of Wisconsin and Local Health Department and will meet their expectations in the way best suited to teaching our students in the building.



We are committed to teaching a full day, five-day week schedule unless unable to by State order.



We are committed to delivering curriculum offerings to those who unable to return to campus. We ask that parents refrain from withdrawing their student to reduce the risk of losing their seat for the 2021-22 school year.

Health and Safety Update

As we prepare to reopen our building, we are working with the following to guide our decision making:

- Recently received DPI's reopening guidelines
- Guidance from the Milwaukee Health Department and CDC recommendations
- We are working on a detailed Curriculum and Instruction plan to partner with our Health and Safety plan

Health and Safety Update

Face Masks

- We are currently considering the wearing of masks by all faculty, staff and students
- Visitors that are permitted inside must wear a mask while in the building
- We will follow any mandates that come from our State and Local agencies
- DPI will provide to Tamarack cloth masks for staff and students
- We will make a complete statement regarding face masks before the start of school



Health and Safety

Monitoring of COVID-19 Symptoms in Students, Families and Staff

- Students and Staff will go through a symptom check upon arrival that will include a symptom checklist and temperature check
- Visitors, including substitute teachers, will be screened prior to entry. Those with symptoms will not be permitted to enter
- Parent/guardians who are picking up children do not need to be screened but will be asked to wait outside for student to be dismissed
- Families will be asked to report possible illness if anyone in their household shows symptoms or has tested positive for COVID-19

CORONAVIRUS (2019-nCoV)

SYMPTOMS



Fever



Headache



Flu



Out of breath



Severe cough



Sore throat

Health and Safety Update

Students who show symptoms while at school

- Teachers and staff will monitor students for symptoms of COVID-19 throughout the day
- If a student displays COVID-19 symptoms during the school day, the parent/guardian will be called to pick up the student
- The designated health monitor will come to the classroom to escort the student to a designated space for isolation until pick-up



Health and Safety Update

Building Safety - Water

- The building's water system has been in use since the closure, with regular flushing of all toilets and running faucets at each sink
- The drinking fountains will be turned off in the building, leaving the water bottle filler functioning
- We are replacing the first-floor drinking fountain with a unit that will have a water bottle filler function
- We will provide disposable cup dispensers and touch-free garbage cans
- Touch-free soap and towel dispensers will be installed at every sink in the building



Health and Safety Update

Limiting Interactions from Outside School

- We will restrict all nonessential visitation, including volunteers for classroom activities, guest speakers, and parent-teacher conferences and will use virtual formats as appropriate
- Visitors permitted inside will be screened before entry, must wear a face mask, maintain physical distancing, and restrict their visit to the location designated by the school
- Families or caregivers picking up students will wait outside for student to be dismissed
- Parents/guardians will only be allowed in the building with an appointment. We are working on new drop off and pick up procedures



Health and Safety Update

Limiting Interactions within the School

- There will be no mixing of students between classrooms
- Students will be asked to remain in their classrooms. If they leave, they must wear a face mask, wash hands, limit movement in the building, and use physical distancing
- Specialists will come to classrooms, rather than students moving about the building
- Recess and restroom break schedules will be created to minimize students in hallways, stairwells, basement and restrooms
- Each class will have a designated park area to keep classes separate during recess time



Health and Safety Update

Classrooms

- Grades classrooms will be arranged to maximize space between students, with all desks facing the same direction, including teacher desk
- All non-essential materials and furniture will be removed from classrooms to create as much space as possible
- Students will all have their own designated supplies and materials
- Any shared equipment will be sanitized after each use



Health and Safety Update

Cleaning and Disinfecting

- The school building will be cleaned every night using the recommended cleaning protocols from the CDC for COVID-19
- All high touch surfaces and bathrooms will be cleaned and sanitized throughout the day, and any shared spaces will be cleaned between groups
- Common areas (sinks, doorknobs, table-tops, shared items, etc.) will be cleaned and sanitized throughout the day
- If COVID-19 is detected in the building we will follow CDC guidelines for closing school and disinfecting the building



Health and Safety Update

Hand Hygiene

- Students and teachers will be washing hands with soap and water on a regular basis throughout the day, or using hand sanitizer when washing is not possible
- Students will be directed to wash hands before entering the classroom, and before and after eating
- We will ensure that each classroom is fully stocked with tissues, paper towels and hand sanitizer
- Hand sanitizer units will be placed at each entrance to the building
- Tissues and no-touch trash cans will be available in common areas



Health and Safety Update

Questions we are still working on:

- Symptom and test tracking – how to best report this and keep it current and accurate
- Scheduling of Drop-off and pick-up, recess time, and restroom breaks: We are working on a procedure that will help avoid too many people in the basement, restroom and hallways at one time
- Types of masks and/or face coverings that will be use by faculty and staff

Decisions made for the 2020-21 School Year

- **Suspended for 2020-21**

- Before and after school extended care
- Instrument and chorus lessons (determining use of pentatonic flutes, recorders, singing and recitation) will provide music appreciation through the Conservatory for 2020-21
- Winter Fair
- In-person Benefit events
- In-person home visits
- Fundraising lunches, popcorn sale, and bagel sale
- Students moving to different rooms for instruction
- Field trips needing transportation (determining possibility of UEC trips and walking trips)
- Assemblies and festival gatherings (Faculty will work to reimagine for 2020-21)
- Joyful Mornings Parent/Tot Play Group



Decisions made for the 2020-21 School Year

- **Changes for 2020-21**

- All specialty classes will be taught in grades classrooms or outside
- All grades will have a full day assistant
- Full day cleaning services
- Students will be provided their own dedicated supplies
- Dedicated Health Room, staffed with a Health monitor
- When moving to Distance Learning a 48-hour period will be given to prepare to begin remotely
- Increased outdoor time
- Additional artistic and therapeutic activities & resources
- Minimize entry into building (by appointment only)

A graphic illustration on the right side of the slide. It features a hand holding a white sign with the words "CHANGE AHEAD!" written in large, bold, green, sans-serif capital letters. The background is a solid orange color. The sign is held by a yellow hand emerging from a green sleeve. The overall style is clean and modern.



The following questions were submitted to ParentSquare before the meeting:

- Will attendance or enrollment policies be flexible for families who may need to keep their children out of school due to COVID contraction, illness in the family, death in the family, or discomfort with sending kids to school at certain times of increased COVID cases in the community. It will feel important to me to be able to keep my child home from school when needed without fear of losing our place at the school.
- Will there be an option for our kids to virtually attend school again without losing our Choice seat? Or at least until it seems to be declining and under control?
- What will happen to the graduating 8th and incoming 8th grade class trip funds? Even though I do not see the incoming 8th grade on the list of suspended activities I will assume this is cancelled based on fundraising activities being cancelled.
- How is the 8th Grade able to raise money for their class trip without "fundraising Lunches, Popcorn and Bagel Sale" etc?



Next Steps

- **Community Feed Back**

- A survey to gather feedback from the community regarding our plans will go out next week
- We invite all community members to participate in the survey
- The survey will also allow space for questions to be ask

The recording of this Town Hall Meeting will be available on ParentSquare

- **Next Town Hall Meeting**

- August



Thank you
and have a
pleasant evening